

Atrium Art Gallery Fall/Winter 2016-17 Invitational Exhibition

September 29, 2016 – January 5, 2017

Featuring works by

Raymond Sicignano – 2nd Floor Hallway

Cheryl Safren - 2nd Floor Atrium

Sean Carney - 3rd Floor Elevator Lobby, Hallway

Nicholas Gamarello – 3rd Floor Atrium

Etty Yaniv - 4th Floor Elevator Lobby, Hallway

Doug DePice – 4th Floor Atrium

Gail Winbury - 5th Floor

Atrium Gallery



Managed by

Dr. Lynn L. Siebert, Gallery Director
Administration & Records Building/ Court Street, PO Box 900
Morristown, New Jersey 07963-0900
(973) 285-5115, ext. 10 Lsiebert@morrisarts.org

Welcome from the Morris County Board of Chosen Freeholders

The Morris County Board of Chosen Freeholders welcomes you to the Atrium Art Gallery and the hundreds of pieces it contains on a rotating basis.

Designed to fill the need in Morris County for a location for artists to exhibit their work, the gallery offers four floors of atrium and lobby space for exhibition in the County of Morris Administration and Records Building located on Court Street in Morristown.

The exhibitions have been viewed by hundreds of residents. Indicative of the support the Gallery has received from artists in Morris County and throughout New Jersey, New York and Pennsylvania, is the long list of advance bookings and ongoing requests to exhibit.

The Art Gallery started in 1977 in a small waiting room in the former County Administration Building, now the Courthouse Annex. In this room, the Morris County Heritage Commission held numerous small exhibitions of paintings, prints and photographs by well-known New Jersey artists. The Heritage Commission continues to contribute artwork to the Atrium Art Gallery.

In January 2008, at the request of the County, Morris Arts assumed oversight for planning exhibitions at the Atrium Gallery.

As you walk through the corridors viewing the artwork, the Board of Chosen Freeholders is certain you will enjoy the exhibition and be enriched by its contents.

Kathryn A. DeFillippo,
Freeholder Director



Morris Arts, located in Morristown, NJ, is a not-for-profit organization founded in 1973 dedicated to building community through the arts. Using the arts to inspire, connect and engage, Morris Arts serves as a resource for Morris County with a special focus on arts programming in the community and in the schools, arts advocacy, and support of the Morris Area community of artists and arts organizations. The New Jersey State Council on the Arts has consistently awarded the Arts Council its prestigious "Citation of Excellence" and designated it as a "Major Service Organization" in recognition of the Arts Council's "solid history of service excellence, substantial activity, and broad public service."

There is no charge to artists to exhibit at the Atrium Art Gallery and no commission is taken on sales of work exhibited at the gallery. Exhibits typically hang for periods of two-three months. For more information about exhibiting at or purchasing art exhibited in the Atrium Art Gallery, please contact Gallery Director Dr. Lynn L. Siebert, Director of Arts Participation & Communication for Morris Arts, at (973) 285-5115, ext. 10 or LSiebert@morrisarts.org.

CHERYL SAFREN, 2nd Floor Atrium

September 29, 2016-January 5, 2017



L-R: Cheryl Safren's oil paint collages on copper: *Rainforest*; *Habitation I* and, *Koop's Homestead*.

CHERYL SAFREN: Where Science and Art meet

During my freshmen year at Pratt Institute, the teacher instructed us to think of the word 'machine' and come back next week with a visualization of the idea of 'machine.' For some of the other students, this may have been just another homework assignment; but for me something clicked and I couldn't get the idea of machine out of my head. The resulting torrent of ideas that began with this assignment propelled a decade of artwork. In 1978, I moved to Michigan where, fortunately for me, a third of the nation's machine tool industry operated within a 25-mile radius of my home. So my industrial paintings flourished and my obsession with the shapes inherent in engineered forms strengthened.

In general, these works are isolated still lives of man-made structures. The color, form and order I imposed are artificial, exact and ordered, in contrast to the disorder and unfinished condition that exists in nature. This work does not make any social statements, either positive or negative, regarding the human condition in relation to industry. My concern was with the design and pattern of engineered forms and the compositional merit inherent in the elements of their structure. Though I exhibited extensively in museums, galleries, and educational institutions during this ten-year period, there were two endeavors that stand out as particularly noteworthy. My show, "Chromachines," at Lawrence Institute of Technology, in Southfield, Michigan, was well-attended and had favorable reviews. Also, I completed three industrial paintings for Place Machine a division of Thyssen Industrie of Germany, which has a manufacturing facility and an office building housing its engineering staff in Troy, Michigan. The three paintings are displayed in a concourse, glass-enclosed on one side, linking both buildings. At night, this glass-enclosed area is illuminated, and motorists on I-75 can view the panels from the highway. There are a few works in the show from this period. On display are *Precision Table*, *Solar Color Collector*, *Fire Escapes*, and the *Airplane* paintings.

When I moved back East, I left behind the hardedge, inanimate heavy industrial base that provided inspiration for this artwork. So ten years and fifty-five art works later, I made a 180-degree turn from this genre. By 1988, my work became very organic and very textural. While patterns still fascinated me, now the patterns explored were the ones that appeared in nature. The order found in these patterns, contrasted with the random and unfinished state of all organisms, provides a dynamic equilibrium. I began with the simplest flora and fauna and created art works using combination of sand, gravel, wood shavings, plastics, molding materials, paints and other materials.

On the way up the evolutionary scale, *Coelenterates*, which is in the permanent collection of the Marine Biological Labs in Woods Hole, MA and *Worms*, which hangs in the School of Forestry at the University of Georgia, were produced during this period. By 1990, the time of my one-person show at the American Association for the Advancement of Science, in Washington D.C. I was exploring cell biology in humans. This show, entitled "Interior Landscapes," contained some of the fifty-four works produced on this theme, some of which are in the permanent collection of the University of Maine's School of

Atrium Art Gallery Exhibition

Biochemistry, Molecular Biology and Microbiology. A few of the remaining pieces from this period are in this show. They are *Epithelium 4*, *Novogenesis*, *Creation 1*, *SeaLife 5* and *SeaLife 6*.

My 'biota' works, especially the microorganisms and the cell biology paintings, focus on and enlarge microscopic worlds. The outer space paintings do just the opposite. The viewer is somewhere in outer space looking down onto the strange surface of alien planets. The materials used in these works are silica, powdered pigments and paint. These aerial views appear to be beautiful textural color studies. Besides perspective (worm's eye view vs. bird's eye view), the derivation of the work changes as well. The earlier works were based on biology and worlds that do exist, whereas this work is based on fantasy and worlds that spring to life from the artist's imagination. The works in this show from this period are *Aerial View of Copper Planet*, *Colloidal Delta*, *Jungle Planet*, *Plate Tectonics of Jungle Planet*, *Aerial View of Purple Planet* and *Aerial View of Pink Planet*.

The painting *Aerial View of Copper Planet*, gave birth to a whole new style, prompted by a query from the manager of collections at the Whitney Museum when she asked "What is happening on the surface of this planet?" This question gave birth to CopperWorld. Twenty years of researching and painting the physical, biological and earth sciences had brought me to this point. Scientific principles were used to figure out what might be happening in this imaginary world. All artwork in CopperWorld is created on copper sheeting.

A broad range of life forms inhabit CopperWorld. On exhibit in this show is *Gestation 7* where creatures emerge in very dim light while attached to cave walls. In *Habitation 1*, the atmosphere is dense. The life forms are all connected in this work and it's difficult to tell where one begins and another ends. A meeting is apparently in progress. On *Planet Copper*, communication is not made by sound but generated through touch because of the gaseous atmosphere inhibits acoustic waves. The creatures that have evolved in this habitat have very interesting and varied skin textures. One creature in this painting has loose skin draped over its face, which draws like a curtain to allow more or less light in. In *Habitation 5*, also known as *CopperWorld Rain Forest*, is a densely foliated place that bears some resemblance to the floor of a rain forest or jungle, but the plant and animal life is strange and unfamiliar. A sap essential to pollination in this habitat appears to ooze out and actually glows in the dark. 'Habitation 9', also known as *Koop's (short for Cupric) Homestead*, features a copper being standing just outside a crevice within a cave. His body is firm but flexible and his feet suggest that he has the ability to jump quite high yet squeeze through tight spaces. Growing on the exterior of his abode are assorted creatures in various stages of gestation.

All artwork in this show is for sale. If interested in purchasing any of the art pieces please contact info@safren.com. The prices of all of the work is listed below. If you like, visit my website Safren.com.

To purchase artworks, contact Gallery Director, Dr. Lynn L. Siebert, at Lsiebert@morrisarts.org.

CHERYL SAFREN, 2nd Floor Atrium

#	Artist	Title	Medium	Dimensions(HxW)	Price
1	Cheryl Safren	Jungle Planet Tectonics	Mixed media on canvas	30x44	\$2,500
2	Cheryl Safren	Jungle Planet	Mixed media on canvas	48x32	\$3,000
3	Cheryl Safren	Aerial View of Purple Planet	Mixed media on canvas	50x34	\$2,500
4	Cheryl Safren	Colloidal Delta	Mixed media on canvas	48x34	\$1,200
5	Cheryl Safren	Aerial View of Copper Planet	Mixed media on canvas	36x52	\$3,000
6	Cheryl Safren	Aerial View of Pink Planet	Mixed media on canvas	34x50	\$450
7	Cheryl Safren	Novogenesis	Paint on canvas	30x42	\$750
8	Cheryl Safren	Epithelium 4	Mixed media on canvas	30x42	\$1,200
9	Cheryl Safren	Creation 1	Paint on canvas	21x21	\$350
10	Cheryl Safren	Airplane 1	Acrylic paint on canvas	36 x56	\$800
11	Cheryl Safren	Airplane 3	Acrylic paint on canvas	13x48	\$600
12	Cheryl Safren	Airplane 2	Acrylic paint on canvas	16x48	\$1,200
13	Cheryl Safren	SeaLife 5	Mixed media on canvas	38x22	\$900
14	Cheryl Safren	SeaLife 6	Mixed media on canvas	30x30	\$650
15	Cheryl Safren	Land Formation	Oil paint on copper	18x24	\$200
16	Cheryl Safren	Gestation 7	Oil paint on copper	18x24	NFS
17	Cheryl Safren	Habitation 1(aka Gaseous Habitat)	Oil paint on copper	36x24	\$2,000
18	Cheryl Safren	Habitation 5 (aka Rainforest)	Oil Paint on Copper	36x24	\$2,000
19	Cheryl Safren	Habitation 9(aka Koop's Homestead)	Mixed media on copper	48x36	\$3,000
20	Cheryl Safren	Dreamstate	Mixed media on canvas	29x40	\$2,500
21	Cheryl Safren	Baggage and Express 2	Acrylic paint on canvas	30x26	\$750
22	Cheryl Safren	Fire Escapes	Acrylic paint on Masonite™	37x55	\$3,500
23	Cheryl Safren	Solar Color Collector	Acrylic paint on canvas	34x58	\$500
24	Cheryl Safren	Precision Table	Acrylic paint on Masonite™	38x58	\$5,000

RAYMOND SICIGNANO, 2nd Floor, Hallway

September 29, 2016-January 5, 2017



L-R: Raymond Sicignano's oil paintings on linen: *Mare*; *Bar BQ* and *Denny's Ice Cream*

RAYMOND SICIGNANO: AN URBAN CULTURAL EXPLORATION

A series of paintings examining the analogous activities of Art & Anthropology

All cities have a distinct aura about them that is unique and different from other urban locales. Each neighborhood within a city, especially in my hometown of New York, has its own unique character & feeling that is explicit and different from other parts of the city.. This urban landscape series depict venues and "mom-and-pop" type local businesses that seem to be gradually vanishing, succumbing to the onslaught of gentrification and development, leaving behind a sterile and homogenous landscape of trademarks and logos, rendering a banal uniformity to our urban environments. Ironically, it is their very existence that attracts people to these neighborhoods, prompting huge rent increases and development which ultimately drives these merchants out, changing the fabric of the area and destroying the very reason for the neighborhood's popularity in the first place.

Although several of these places depicted in this exhibit are no longer in existence and represent a time and sensibility that may be gone forever, the sentiment in these paintings is not nostalgic. I try to express and commemorate the splendor and uniqueness of these venues as they stand bold and brazen against the ever changing urban landscape during their transient existence. The paintings capture and celebrate the location's distinctive atmosphere, the "Spirit of Place" which is a reflection of the culture and sensibilities of the people that inhabit these cities. Each painting stands alone, telling its own special story while the entire series, as a whole, is a study that captures the unique characteristics of the neighborhoods and cities depicted, defining who we are at this particular time and providing a history for us to reflect on as our cities evolve in the 21st Century.

For more information, visit www.raizart.com

To purchase artwork, please contact Gallery Director, Dr. Lynn L. Siebert, at Lsiebert@morrisarts.org.

RAYMOND SICIGNANO, 2nd Floor, Hallway

September 29, 2016-January 5, 2017

#	<i>Artist</i>	<i>Title</i>	<i>Dimensions</i>	<i>Medium</i>	<i>Price</i>
1	Raymond Sicignano	Subway Inn Upper East Side, NYC	30 x 40	Oil on Canvas	\$6,750
2	Raymond Sicignano	Rivershack Tavern New Orleans	22 x 28	Oil on Canvas	\$3,500
3	Raymond Sicignano	Midday at Midnight Englewood, NJ	24 x 30	Oil on Canvas	\$4,000
4	Raymond Sicignano	Denny's Ice Cream Coney Island, Brooklyn	24 x 36	Oil on Linen	\$4,750
5	Raymond Sicignano	Mare Chelsea, NYC	22 x 28	Oil on Linen	\$3,500
6	Raymond Sicignano	Ben's Chili Washington, DC	30 x 24	Oil on Linen	\$4,000
7	Raymond Sicignano	Red Hook Bait & Tackle Brooklyn, NY	20 x 24	Oil on Canvas	\$3,000
8	Raymond Sicignano	Bar BQ Washington Heights, NY	24 x 30	Oil on Linen	\$4,000
9	Raymond Sicignano	Recovery Room Harlem, NYC	22 x 28	LTD Edition Lithograph	\$550
10	Raymond Sicignano	Yonah Schimmel Lower East Side, NYC	30 x 40	LTD Edition Lithograph	\$650

NICHOLAS GAMARELLO, 3rd Floor Atrium

September 29, 2016 - January 5, 2017



L-R: Nicholas Gamarello's acrylics on canvas, *American Wolfpack (Lulu and Jug Pilots)* and *Native American Group Portrait*; oil on canvas, *James Brown*, and acrylic on canvas, *Prix St. George*.

Growing up in Jersey City the son of a military man, Gamarello was an art-obsessed young boy fueled by his father's heady air force stories, drawn to the heraldry of the military and the romance of the WWII fighter pilot jacket. Later, as an artist, he began collecting, then restoring those jackets, which led to creating new artwork on historically based designs. Ultimately, his passion for the authenticity of aviation artwork led to commissions from celebrities, and later to design stints at companies like Cockpit, Avirex, Willis and Geiger and Ralph Lauren. Work at the Macy's Parade Studio, Ghurka, John B. Stetson and Girbaud came later. Throughout his varied work as a designer, Gamarello has also steadfastly remained dedicated to his work as a fine artist.

Aside from art, his love for both aviation and history left a mark on Gamarello as indelible as the process he has perfected to tattoo leather. His aviation artwork and historical restoration of thousands of fighter pilot leather bomber jackets – including entire flying team jackets (for the Patrouille De France, many Top Gun pilots and for actual legendary WWII fighter and bomber pilots) - have been exhibited at the Smithsonian Institution's Air and Space Museum in Washington, D.C., as well as at the National Museum of the United States Air Force in Dayton, Ohio.

As a child, Gamarello's obsessions were painting, drawing and sketching, as well as horses, history, aviation and photography. Today, the fine and graphic artist continues to express himself creatively, as muralist, textile designer, equestrian and musician, noting that it is his art that defines him. "I have a hard time distinguishing where my art ends and my fashion begins," shares the multifaceted artist, but "art has a calming effect on me. I feel it's almost my purpose to create art."

"I don't think of myself as an eccentric or wild dresser. I think of myself as very conservative and subdued," continues the designer, who is rarely without his hat (as in never) or a vest, and dresses daily in denim because "it grounds me." His strength is in his style. "Dressing is about expression and who we are."

He describes another powerful influence reflected in this exhibit as well: "The '60s British invasion and music of The Beatles, The Rolling Stones (more Anita Pallenberg than the group) and David Bowie, not only influenced me musically, I was enamored with the whole visual package. It was magic." That magic translates into both collections. There's the rock and roll glamour, the preening style, but there's also early Americana, industrial work wear and everyday comfort pieces. Of course, hats play a stellar role. "A hat is always the finishing touch," he insists, and recalls working as head design director for John B. Stetson as "one of the happiest times in my life. That was a perfect dream job for me."

Gamarello describes his unusual artistic career path thus: "I have been working on aviation history art since a boy. Through the years of working as a professional fine artist painter, I have balanced my occupation with areas of the arts including commercial illustration art for various books, magazines and

Atrium Art Gallery Exhibition

record industry art. I have also worked as a Fashion Designer for various globally renowned iconic brands such as:

- *Polo Ralph Lauren, 12 years as personal assistant designer to Mr. Ralph Lauren and was involved with just about every division in the organization including RRL and Polo Equestrian.
- * Ghurka leather goods, worked as Creative Director.
- * Marithe. & Francois Girbaud, worked as designer of Men's.
- *John B. Stetson, worked as Creative Director of the brand.

I have always tried to couple my passion for history and the arts with my work and craftsmanship.”

With clients like Steven Spielberg, Mel Blanc, comedian David Brenner and as the subject of a feature article in the [NY Times](#) (visit goo.gl/P3t8af), this distinguished artist and designer paints on canvas, on leather bomber jackets, guitar cases and other unconventional media to capture the spirit of WWII fighter pilots, of heroism in and out of war, Native American themes, vintage 1940s-style pinups, classic rock ‘n roll stars, equestrian competitions, and other contemporary themes.

For more information about Gamarello, visit his Facebook page at <https://www.facebook.com/Gamarello-1411701049059467/>.

To purchase art, please contact Gallery Director, Dr. Lynn L. Siebert at Lsiebert@morrisarts.org

Atrium Art Gallery Exhibition

NICHOLAS GAMARELLO, 3rd Floor Atrium

September 29, 2016 - January 5, 2017

#	Artist	Title	Medium	Dimensions	Price
1	Nicholas Gamarello	Hampton's Classic Horse Show Poster	Printed framed poster	31 ½x25	\$300
2	Nicholas Gamarello	Thoroughbreds	Oil on canvas	12x24	\$12,500
3	Nicholas Gamarello	Far Hills Saddle Enclosure	Acrylic on canvas	16x20	\$8,000
4	Nicholas Gamarello	Prix St. George	Acrylic on canvas	20x24	\$6,500
5	Nicholas Gamarello	Horse Auction	Oil on canvas	14x18	\$6,500
6	Nicholas Gamarello	Miss Winifred Hudson	Oil on canvas	16x20	NFS
7	Nicholas Gamarello	Artist with Hop Pickers in Hampshire	Oil on canvas	20x24	\$8,500
8	Nicholas Gamarello	The Hunter	Acrylic on canvas	11x14	\$4,000
9	Nicholas Gamarello	Harvest Girls	Acrylic on canvas	12x16	\$5,000
10	Nicholas Gamarello	Race Track Saddle Enclosure	Acrylic on canvas	9x12	\$4,500
11	Nicholas Gamarello	Side Saddle Habit	Oil on canvas	11x14	NFS
12	Nicholas Gamarello	Far Hills Race Day	Oil on canvas	18x24	\$8,000
13	Nicholas Gamarello	Royal Outcast	Acrylic on canvas	14x18	NFS
14	Nicholas Gamarello	Lifeguard's Officer	Acrylic on canvas	12x12	\$4,500
15	Nicholas Gamarello	Household Cavalry Full Figure	Oil on canvas	8x30	\$6,500
16	Nicholas Gamarello	Blues & Royals with Heraldry	Oil on canvas	12x24	\$8,000
17	Nicholas Gamarello	Her Royal Majesty	Oil on canvas	16x20	\$6,500
18	Nicholas Gamarello	Fusiliers & Ladies	Acrylic on canvas	16x20	\$7,500
19	Nicholas Gamarello	British Cavalry at Ypres WWI	Acrylic on canvas	12x24	\$7,500
20	Nicholas Gamarello	Scot Grey's Officer in France 1914	Oil on canvas	14x18	\$8,000
21	Nicholas Gamarello	Bengal Lancer Campsite Northern Frontier	Oil on canvas	16x20	\$7,500
22	Nicholas Gamarello	British Cavalry Troopers WWI	Acrylic on canvas	16x20	\$7,500
23	Nicholas Gamarello	Field Marshall Sir John French, Mons, France WWI	Acrylic on canvas	16x20	\$7,500
24	Nicholas Gamarello	Road to Armentieres 1915	Acrylic on canvas	16x20	\$6,500
25	Nicholas Gamarello	Retreat from Mons	Acrylic on canvas	20x24	\$8,000
26	Nicholas Gamarello	Royal Marines in Shanghai	Oil on canvas	12x16	\$5,500
27	Nicholas Gamarello	Empirical Heroes	Acrylic on canvas	24x30	\$12,000
28	Nicholas Gamarello	New Frontier	Acrylic on canvas	11x14	\$5,000
29	Nicholas Gamarello	Patriot Dandy	Acrylic on canvas	10x14	\$4,500
30	Nicholas Gamarello	Wooly Chinks	Acrylic on canvas	12x24	\$7,000
31	Nicholas Gamarello	Wapiti Wyoming Cow Punchers	Acrylic on canvas	16x20	\$7,500
32	Nicholas Gamarello	Barney Old Coyote	Acrylic on canvas	16x20	\$7,500
33	Nicholas Gamarello	Wolf Robe (Cheyenne)	Acrylic on canvas	11x14	\$4,500
34	Nicholas Gamarello	Native American Group Portrait	Acrylic on canvas	20x24	\$9,000
35	Nicholas Gamarello	Union Artillery Unit	Acrylic on canvas	16x20	\$9,000
36	Nicholas Gamarello	Royal Navy Sailor	Acrylic on canvas	11x14	\$4,000
37	Nicholas Gamarello	Lulu & Salty Dogs	Acrylic on canvas	24x36	\$13,000
38	Nicholas Gamarello	56 th Fighter Group, England 1943	Acrylic on canvas	16x40	\$13,000
39	Nicholas Gamarello	Lulu & Jug Pilots	Acrylic on canvas	24x36	\$13,000
40	Nicholas Gamarello	Ron Wood in Concert	Oil on canvas	12x24	\$7,000
41	Nicholas Gamarello	Group Portrait of the Rolling Stones	Acrylic on canvas	30x40	\$15,500
42	Nicholas Gamarello	Lulu in the Park with Friends	Acrylic on canvas	16x20	\$8,500
43	Nicholas Gamarello	Eric Clapton with Black Beauty	Oil on canvas	20x24	\$8,500
44	Nicholas Gamarello	James Brow	Oil on canvas	12x16	NFS
45	Nicholas Gamarello	Clapton in Concert	Oil on canvas	16x20	\$7,500
46	Nicholas Gamarello	American Beauty	Acrylic on canvas	12x16	\$4,500
47	Nicholas Gamarello	Afternoon Tea	Acrylic on canvas	12x16	\$5,000

SEAN CARNEY, 3rd Floor Hallway, Elevator Lobby September 29, 2016 - January 5, 2017



L-R: Sean Carney's wood stain and dremel on wood pieces, *Lambertville Station*, *Old City Hall*, *State Theatre [New Brunswick]*; *Morristown [Morris County Courthouse]*.

SEAN CARNEY

As a Fine Artist I feel the need to touch every medium. I enjoy the elements that construct the artwork and relish in the process. My recent works on wood are done using only wood stain and a Dremel. There has been an obvious progression in my works lately in regards to color and surface. Through experimentation with different types of water based stains I have been able to expand my pallet and texture by leaps and bounds. My paintings look like traditional paintings from a distance, but upon closer inspection you gain a realization that they are not traditional at all. It is that moment of contemplation that drives me to continue my growth and development.

Awards:

2016 Mercer County Culture and Heritage Purchase Award

Solo Shows:

2014 New Brunswick City Hall

2015 Prindiville Moher Gallery

2016 Artworks Trenton

2016 Exhibitions:

Artists in Embassies program (Muscat Oman)

Atrium Gallery

Prindiville Moher "New Year/New Art"

Artworks Trenton "It's All Wood"

Prindiville Moher Group Show

Images Art Gallery

Hardcastle Gallery

"Mercer Artists" Mercer County Collage

Artists in Embassies "United States Embassy Oman"

Milk Crate Gallery "Light it Up Blue"

"Ellarslie Open 33" Trenton City Museum

Prindiville Moher "All Together Now"

2015 Exhibitions:

Featured Artist at New Brunswick City Hall

"Small Works Show" Alfa Art Gallery New Brunswick

Featured Artist at Bluestone Gallery in Philadelphia

"Mercer Artists" Mercer County Collage

"ISCJ Art Gala"

"Artists of Yardley" Juried Exhibition

"Plastic Club of Philadelphia" Cooperative Art Exhibit

"Ellarslie Open 32" Trenton City Museum

"Mainline Arts Center" Spring Gala

Atrium Art Gallery Exhibition

"Innovation" At Munich Re America, curated by Artworks Trenton
Featured Artist at Hardcastle Galleries (Delaware)
Naked in New Hope #9 at Sidetracks Gallery
Featured Artist at Prindiville Moher Gallery (New Jersey)
Featured Artist at Images Art Gallery (New York)
Prindiville Moher "Salon Exhibit"
Hardcastle Gallery "Small Works Exhibit"

2014 Exhibitions:

"The Streets Where We Live" Artists House Gallery Philadelphia
"Mercer Artists" Mercer County Collage
"On The Edge, Looking With New Eyes" Artists House Gallery Philadelphia
"Ellarslie Open 31" Trenton City Museum
"On The Human Form, The Measure of All Things" Artists House Gallery Philadelphia
"On Flora and Fauna, Close to the Heart" Artists House Gallery Philadelphia
Private showing at SBS Consulting LLC
"Philly to the Shore From Brick to Sand" Artists House Gallery Philadelphia
Trenton Art All Night
"Studio Show" Artists House Gallery Philadelphia
"Naked in New Hope 8" Sidetracks Gallery New Hope
"Philadelphia the Streets Where We Live" Artists House Gallery Philadelphia
"Cult Classics" Hashtag Gallery Toronto
"New Brunswick Artists Salon" Alfa Art Gallery New Brunswick
"Small Works Show" Artists House Gallery Philadelphia
"Small Works Show" Alfa Art Gallery New Brunswick

Permanent Collection

Sam Adams Brewery Boston
New Brunswick Public Schools N.J.
Capital Health Systems Hopewell
River Horse Brewery Ewing N.J.
Lawrence Township Public Schools N.J.
Triumph Brewery Princeton N.J.

I have studied the Fine Arts at the following schools

School of Visual Arts
Fashion Institute of Technology
Montserrat College of Art
New Jersey City University.

I have a BFA with a focus on Portrait and Figure Painting from New Jersey City University.

<http://www.carneystudios.net>

[SeanCarneynj@facebook.com](https://www.facebook.com/SeanCarneynj)

[@Carneystudios@instagram](https://www.instagram.com/Carneystudios)

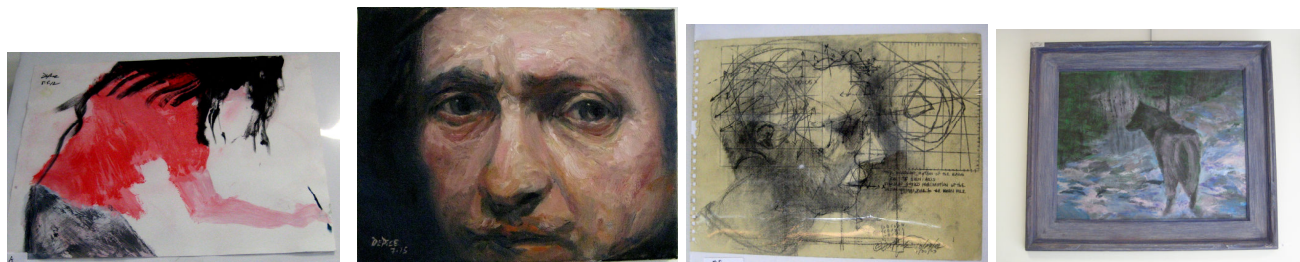
To purchase artwork, please contact Gallery Director, Dr. Lynn L. Siebert, at
Lsiebert@morrisarts.org.

SEAN CARNEY, 3rd Floor Hallway, Elevator Lobby September 29, 2016 - January 5, 2017

#	Artist	Title	Medium	Dimensions	Price
1	Sean Carney	Before the Bloom	Wood Stain and Dremel on Wood	24x24	\$1,300
2	Sean Carney	New Hope Sunset	Wood Stain and Dremel on Wood	18 round	\$750
3	Sean Carney	The Farm House	Wood Stain and Dremel on Wood	18 round	\$750
4	Sean Carney	Lambertville Station	Wood Stain and Dremel on Wood	24x24	\$1,300
5	Sean Carney	The Union League	Wood Stain and Dremel on Wood	24x24	\$1,300
6	Sean Carney	Copley Hotel	Wood Stain and Dremel on Wood	24x24	\$1,300
7	Sean Carney	Old Queens	Wood Stain and Dremel on Wood	24x24	\$1,300
8	Sean Carney	State Theater	Wood Stain and Dremel on Wood	24x24	\$1,300
9	Sean Carney	The Boat House	Wood Stain and Dremel on Wood	24x24	\$1,300
10	Sean Carney	Morristown	Wood Stain and Dremel on Wood	11x14	\$400
11	Sean Carney	The Cast	Wood Stain and Dremel on Wood	10x20	\$600
12	Sean Carney	Motif #1	Wood Stain and Dremel on Wood	9x12	\$300
13	Sean Carney	Portland	Wood Stain and Dremel on Wood	11x14	\$400
14	Sean Carney	Lambertville	Wood Stain and Dremel on Wood	5x7	\$125
15	Sean Carney	Independence Hall	Wood Stain and Dremel on Wood	5x7	\$125
16	Sean Carney	Homage to Michael Graves	Wood Stain and Dremel on Wood	16x20	\$800
17	Sean Carney	Intersection #2	Wood Stain and Dremel on Wood	11x14	\$400
18	Sean Carney	The Campus	Wood Stain and Dremel on Wood	9x12	\$300
19	Sean Carney	Merger #2	Wood Stain and Dremel on Wood	16x8	\$400
20	Sean Carney	Merger #1	Wood Stain and Dremel on Wood	16x8	\$400
21	Sean Carney	View From the Whitney #2	Wood Stain and Dremel on Wood	11x14	\$400
22	Sean Carney	New York City Skyview #3	Wood Stain and Dremel on Wood	12x24	\$750
23	Sean Carney	The DNC	Wood Stain and Dremel on Wood	11x14	\$400
24	Sean Carney	City Walk #3	Wood Stain and Dremel on Wood	11x14	\$400
25	Sean Carney	Old City Hall	Wood Stain and Dremel on Wood	12x12	\$400
26	Sean Carney	The City Walk	Wood Stain and Dremel on Wood	11x14	\$400
27	Sean Carney	Capitol City #2	Wood Stain and Dremel on Wood	5x7	\$125
28	Sean Carney	Ellerslie #3	Wood Stain and Dremel on Wood	5x7	\$125
29	Sean Carney	Rutgers New Brunswick	Wood Stain and Dremel on Wood	12x12	\$400
30	Sean Carney	Ben Franklin Bridge	Wood Stain and Dremel on Wood	12x12	\$400
31	Sean Carney	College Ave New Brunswick	Wood Stain and Dremel on Wood	12x12	\$400
32	Sean Carney	The Heldrich	Wood Stain and Dremel on Wood	12x12	\$400

DOUG DEPICE, 4th Floor, Atrium

September 29, 2016 - January 5, 2017



L-R: Doug DePice's works: acrylic wash on paper, *Student in a Creative Moment*; oil on canvas, *Portrait of Rembrandt*; lead and charcoal pencils, *Does this tell us something about the activity of the mind?*; Acrylic paint on board, *Instinct*.

DOUG DEPICE

Veteran fine artist and recipient of two Dodge Foundation grants, Doug DePice has exhibiting professionally since 1976 and his work has been seen in multiple galleries in New York City, the Paris Convention Center in France, the Morris Museum, and the Fine Arts Museum of Long Island. Remarkably prolific, DePice brings an unusual, in-depth, visceral approach to the many subjects to which he devotes his artistic expression. In this exhibit of DePice's art, you will see works ranging from the very traditional, (such as his oil portrait of Rembrandt), to topics featured in school curriculum (powerful studies of Holocaust themes, the influence of Leonardo Da Vinci and the interconnections among art, math, science and music), commentaries on modern life (studies of abandoned rail yards and warehouses, the unwanted and unloved), the beauty and power of wild animals (wolves, swans, etc) and even drawings of his own students (which led to his 2009 book, entitled *An Art Teacher's Drawings of his Students*). DePice uses a wide variety of media – carefully choosing the most appropriate material to convey the emotional depth of his subject matter – and you will see works in pen, pencil, oil, acrylic, tape, charcoal, pastel, impasto – on a multitude of surfaces – each specifically chosen to enhance and deepen the impact of the final work.

Of his studies of old industrial sites, DePice says (in an article by Al Sullivan of the *Hudson Reporter*), "This could be a rusted train trestle, an abandoned car, or a pipe stack, things that were once functional and abandoned and so they've become free. I think this is why I'm attracted to and motivated by Stonehenge and the head on Easter Island. These things are monumental, mysterious, and powerful...."

That DePice thinks deeply about art and its ability to affect people and to express that which otherwise remains inexpressible is evident in so much of his work. His works on Holocaust themes capture the profound tragedy and loss of that era...through the starkness of his depictions, the absence of color, the almost photographic portrayal of such images as crematoria or the raw, haunted images of its victims. But he is also fascinated by his students and, with the barest of brightly colored brushstrokes, he manages to capture the postures, gestures, attitudes and vibrancy of young people interacting with one another, with art, and their quest for answers to life's questions. DePice uses Leonardo DaVinci's works as a model for connecting art with the study of math, science, language, music and he is fascinated by the artistic qualities of certain animal species such as the swan, and especially the wolf – visual metaphors for beauty, power and transcendence.

DePice himself cites this quote by Pablo Picasso: "God is really only another artist. He invented the giraffe, the elephant and the cat. He has no real style; He just goes on trying other things." And he comments: "I love this quote by Picasso. For me it embraces the journey I have taken in art for the last 44 years. Also I feel it explains the variety of visual ideas I have selected for this exhibition. Portrayed in this gallery is an abridged range of some of my interests over the last 4 decades, and some of the

Atrium Art Gallery Exhibition

mediums I have used to achieve expression. Some of the themes that have inspired me are: Noah's Ark, pre-historic cave painting, abandoned structures of industry (warehouses, trestles etc.), the railroad yards in the meadowlands, Street children, the desert people, the artist's studio space as a metaphor for creativity, the cello and violin, interdisciplinary drawings, 15th Century Russian icon paintings of saints, Muslims, Shakespeare's characters, observations of students learning and socializing in school environments, the Holocaust, social justice and human rights, the energy of an object, wolves, swans, etc."

In this exhibit, DePice gives the viewer a sampler of the enormous range of his work, grouping related images so that one can see the connections and evolutions of certain artistic themes and interspersing those groupings with singular works that highlight his versatility and skill as an artist.

Education

- Edward Williams College, Hackensack, N.J.: Associate of Arts Degree, 1968
- Fairleigh Dickinson University, Teaneck, NJ: Bachelor of Arts Degree, 1970
- New York University, Washington Square, NY: Master of Arts in Painting, 1972
- Montclair State College, NJ: Teacher Certification in Art, K - 12, 1974
- School of Visual Arts, NY: courses, 1976
- New York Academy of Art, NY: Painting and drawing courses, 1994 -99

Group Shows

- Parsons-Truman Gallery, 24 West 57th St., NY; 1976
- Paris Convention Center, Paris, France; 1977
- Fine arts Museum of Long Island, Hempstead, NY; 1981
- Friends of Art & Music of Hudson County, Jersey City, NJ: Mixed Media Award; 1982
- West Bank Gallery, West Village, NY; 1984
- Fine Arts Museum of Long Island, Juried Exhibition; 1986
- Cinque Gallery, NY; 1988
- The School House, Croton Falls, NY; 1994
- Spiritual Voices, St. John's Church, Newark, NJ; 1994
- Morris Museum, Morristown, NJ and Bristol Meyers Squibb Gallery, Princeton, NJ; "Making and Teaching Art and Ideas", 1996-1997
- Artwork selected for The National Catholic Reporter's "Jesus 2002" traveling exhibit (N.Y., Chicago, Missouri)

Personal Shows

- Artspace, Jersey City State College, NJ; Struggle for Freedom, 1987
- Five Corners Public Library, Jersey City, NJ; Drawings; 1990

For more information and to view galleries of DePice's works, visit <http://ddepice.wix.com/doug>

To purchase artwork, please contact Gallery Director, Dr. Lynn L. Siebert, at Lsiebert@morrisarts.org.

DOUG DEPICE, 4th Floor, Atrium**September 29, 2016 - January 5, 2017**

#	Artist	Title	Dimensions	Medium	Price
1a	Doug DePice	Relationship drawings-Apple, Rib Cage, Tree Rings	11 x 13 ½ in.	Charcoal pencil and marker	NFS
1b	Doug DePice	Rotation of Earth, weather chart, the ribs, tree ring, the Golden Rectangle	9 x 12 in.	Pencil and marker	"
1c	Doug DePice	Comparative study of Human figure and Weather map	11 x 12 in.	Sanguine chalk and black marker	"
1d	Doug DePice	Comparative study of the Church floor plan of St. Sernin, and the Protein Secondary Structure	8 ¼ x 10 ½ in.	Colored powder pastel and black marker	"
1e	Doug DePice	Work boot as a mathematical constellation	9 ¾ x 14 in.	Ink and charcoal pencil	"
1f	Doug DePice	Convergence of a boot, constellations, and calculus to show the mystery of something large existing in something small	8 x 11 in.	Pencil and marker	"
2a	Doug DePice	Drawing visual patterns of writing music notes and the multiple integrals in calculus is similar. I also combined scientific symbols representing various atoms and molecules in the upper atmosphere. Is music mathematics of atoms and molecules?	8 ½ x 10 ½ in.	Pencil and marker	\$300.
2b	Doug DePice	This drawing integrates a map of the weather patterns at the polar cap with a design of the cardiovascular system. In my eyes the weather map is like the cardiovascular system of the earth, and the cardiovascular system is like the weather map of the body. The flow of air and the flow of blood are like Life's Poems.	8 ½ x 10 ½ in.	Sanguine chalk, marker and pencil	NFS
2c	Doug DePice	Weather systems, calculus, and the human profile	9 x 11 in.	Pencil and marker	NFS
2d	Doug DePice	Interdisciplinary drawing containing carbon molecules, weather chart,, the Golden rectangle, and calculus functions, a rib and a tree ring	9 x 12 in.	Pencil and marker	\$300.
2e	Doug DePice	The Lungs of the Poem	8 1/2 x 11 in.	Pencil and marker	NFS

Atrium Art Gallery Exhibition

2f	Doug DePice	There is a similarity between the design of the rotation of the earth on its spin axis and the shape of the human heart. Does this tell us something about the activity of the mind?	9 x 12 in.	Lead pencil and charcoal pencil	NFS
2g	Doug DePice	Study of the earth's movement on its spin axis, a diagram of the movement of the continental plates, and the human life it supports.	9 x 12 in	Pencil on paper	\$300.
3	Doug DePice	Mathematic Profile	23 x 35 in.	Pencil on Paper	\$1,000.
4	Doug DePice	Cardiovascular System of Calculus/Poetry/Hope	11 x 14 in.	Charcoal Pencil on Paper	\$500.
5	Doug DePice	Mythic Wolves (In Gold and Black)	11 x 17 in.	Acrylic Metallic Paint on Board	\$800.
6a	Doug DePice	Wolves Alerted(study in Blue)	12 x 18 in.	Acrylic and Charcoal on Paper	\$800.
6b	Doug DePice	Red Wolf in landscape	12 x 18 in.	Acrylic on Paper	\$800.
6c	Doug DePice	Wolves Howling Secrets of Stonehenge	12 x 18 in.	Acrylic on Paper	\$800.
6d	Doug DePice	The Gray Wolf	12 x 18 in.	Monoprint-Acrylic on Paper	\$800.
7	Doug DePice	Instinct	24 x 30 in.	Acrylic paint on Board	\$1,500.
8	Doug DePice	Prehistoric Horse	26 x 27 in.	Acrylic paint on foam core board	\$400.00
9a	Doug DePice	Earthly Swan	12 x 16 in.	Acrylic on Paper	\$450.00
9b	Doug DePice	Spiritual Swan	12 x 16 in.	Acrylic on Paper	NFS
9c	Doug DePice	Mythical Swan	12 x 16 in.	Acrylic Paint and Pastel on Paper	\$450.
10	Doug DePice	White Wolves with Orange Background	18 x 24 in.	Acrylic on Paper	\$500.
11	Doug DePice	Blue Wolves at Night	23 x 35 in.	Acrylic paint on Paper	\$3,000.
12	Doug DePice	Lone Wolf in Yellows and Ochres	12 x 18 in.	Acrylic Paint on Paper	\$300.
13	Doug DePice	Horse – Study in Blue	9 x 12 in.	Acrylic paint on paper	\$450.
14	Doug DePice	Two Wolves Howling (Green Background)	15 x 22 in.	Acrylic on Paper monoprint	\$500.
15	Doug DePice	Swan II	28 x 36 in.	Latex gloss and acrylic paint on Vinyl Board	\$600.
16	Doug DePice	Swan I	37 x 48 in.	Acrylic paint on Vinyl Board	\$900.
17	Doug DePice	Young African Girl	26 x 40 in.	Oil Pastel on Paper	\$700.
18	Doug DePice	Mother and Daughter	26 x 40 in.	Oil Pastel on Paper	\$500.
19	Doug DePice	Young Migrant Farmer's Hands	26 x 40 in.	Oil Pastel on Paper	\$700.
20a	Doug DePice	Student in a creative moment	9 x 12 in.	Acrylic wash on paper	NFS
20b	Doug DePice	Puberty and a cell phone	10 x 14 in.	Acrylic paint on black paper	"
20c	Doug DePice	Students in different moods	12 x 16 in.	Acrylic paint on black paper	"
20d	Doug DePice	Puberty	9 x 12 in.	Acrylic paint on paper	"

Atrium Art Gallery Exhibition

20e	Doug DePice	The conversation	10 x 14 in.	Acrylic paint on paper	"
20f	Doug DePice	Students co-operating	10 x 14 in.	Acrylic on black paper	"
21a	Doug DePice	Muslim Women	9 ¾ x 10 in.	Acrylic wash and powder pastel on paper	\$100.
21b	Doug DePice	Thinking with the Heart	9 x 12 in.	Pencil on paper	NFS
21c	Doug DePice	Muslim in Black	9 x 10 in.	Acrylic and Charcoal on paper	\$450.
21d	Doug DePice	The Eye of Higher Awareness	7 ½ x 9 in.	Pencil on paper	NFS
21e	Doug DePice	Muslim Family Immigrating	9 x 12 in.	Acrylic wash and charcoal on paper	\$100.
21f	Doug DePice	Imagine a new anatomy in which we think with the Heart	8 ½ x 11 in.	Pencil on paper	NFS
22a	Doug DePice	Nature Study of Bird with Unusual Beak (observational nature drawing at Environmental center in North Arlington)	9 x 12 in.	Pencil on Paper	\$150.
22b	Doug DePice	Eye of the Horse	9 x 12 in.	Pencil on Paper	\$175.
22c	Doug DePice	The Howl of the Wolf as Color	9 x 12 in.	Watercolor on Paper	\$125.
22d	Doug DePice	Horse Grazing	9 x 12 in.	Pencil on Paper	\$100.
22e	Doug DePice	Study of a Horse	9 x 12 in.	Pencil on Paper	\$100.
22f	Doug DePice	Anatomical Study of Top of Horse's Head	9 x 12 in.	Pencil on Paper	\$150.
22g	Doug DePice	The Prowl- Hunger and Instinct	9 x 12 in.	Lithographic crayon and Acrylic paint on Paper	\$200.
22h	Doug DePice	Wolf in Repose	9 x 12 in.	Watercolor on Paper	\$100.
23	Doug DePice	Portrait of Egyptian Woman	11 x 14 in.	Oil Paint on Paper	NFS
24	Doug DePice	Portrait of Rembrandt	8 x 10 in.	Oil on Canvas	\$1,000.
25	Doug DePice	Portrait of a Muslim Woman- 2 Cultures	11 x 14 in.	Charcoal on Paper	\$550.
26	Doug DePice	Desert People	8 ½ x 11 in.	Acrylic Paint on Paper	\$2,500.
27	Doug DePice	Paint Brushes (Impasto)	16 x 20 in.	Oil paint on canvas	\$3,500.
	Doug DePice				
28a	Doug DePice	Noah's Hands with Bird	9 x 12 in.	Graphite stick on paper	NFS
28b	Doug DePice	Noah Holding Sheep	9 x 12 in.	Acrylic wash and charcoal on paper	NFS
28c	Doug DePice	Noah Gently Holding Bird	9 x 12 in.	Graphite stick on paper	NFS
28d	Doug DePice	Elephant Entering Ark	12 x 16 in.	Print of original	\$50.
28e	Doug DePice	Cattle resting in the Ark	8 ½ x 11 in.	Acrylic paint on paper board	NFS
29	Doug DePice	Noah Building the Ark	22 x 28 in.	Inkjet Print	NFS
30a	Doug DePice	Some Shakespearean Characters- Hamlet- Indecisive	8 ½ x 11 in.	Acrylic on Paper Board	NFS
30b	Doug DePice	Conspirators- corruption(from play Macbeth)	8 ½ x 11 in.	same	"
30c	Doug DePice	Ophelia - Loyalty(from Hamlet)	8 ½ x 11 in.	same	"
30d	Doug DePice	Banquo- cautious and brave(from Macbeth)	8 ½ x 11 in.	same	"
30e	Doug DePice	Malcolm and Donalbain - revenge(from Macbeth)	8 ½ x 11 in.	same	"
30f	Doug DePice	Macbeth and Lady Macbeth- ambition	8 ½ x 11 in.	same	"
30g	Doug DePice	Witches- Evil- 3 "Black and midnight hags" (from play	8 ½ x 11 in.	same	"

Atrium Art Gallery Exhibition

		Hamlet)			
30h	Doug DePice	Claudius – deception-(from play Hamlet)	8 ½ x 11 in.	same	“
31	Doug DePice	The Artist's Studio	18 x 24 in.	Oil Paint on paper	\$1500.
32	Doug DePice	Artist's Brushes	11 x 14 in.	Oil Paint on Canvas	NFS
33	Doug DePice	Landscape- Mountains of New York State	33 x 48 in.	Acrylic on Vinyl	NFS
34	Doug DePice	The Light of Knowledge is the Flame of Human Hope	26 x 33 in.	Graphite on Paper	\$950.
35	Doug DePice	Ochre Still Life	20 ½ x 33 in.	Acrylic Paint on Brown Paper	\$600.
36	Doug DePice	Violin	22 x 35 in.	Charcoal on Paper	\$400.00
37	Doug DePice	The Green Mast	12 x 16 in.	Acrylic Paint on Paper	\$2,000.
38	Doug DePice	Red Garage Door in Secaucus	9 x 12 in.	Acrylic Paint on Paper	\$450.
39	Doug DePice	Abandoned Garage in Secaucus	9 x 12 in.	Acrylic Paint on Paper	\$450.
40	Doug DePice	Abandoned Warehouse in Brooklyn	12 x 16 in.	Acrylic Paint on Paper	\$750.
41	Doug DePice	House in Maine	9 x 12 in.	Charcoal on Paper	\$250.
42a	Doug DePice	Train car	8 ½ x 11 in.	Black acrylic paint on paper board	\$400.
42b	Doug DePice	Train trestle in the meadowlands	8 ½ x 11 in.	Same as above	\$400.
42c	Doug DePice	Industrial rail yard in meadowlands	8 ½ x 11 in.	Same as above	\$350.
42d	Doug DePice	Train trestle over the meadowlands	8 ½ x 11 in.	Same as above	\$350.
42e	Doug DePice	Two train cars	8 1/2 x 11 in.	Same as above	NFS
42f	Doug DePice	The Overpass	8 ½ x 11 in.	Same as above	\$350.
42g	Doug DePice	The meadowlands with telephone	8 ½ x 11 in.	Same as above	\$350.
42h	Doug DePice	Train cars in rail road yard	8 ½ x 11 in.	Same as above	\$400.
43	Doug DePice	Train Trestle	12 x 16 in.	Oil on Canvas	\$650.
44	Doug DePice	Train Trestle at Sunset(study in Black and Orange)	11 x 14 in.	Oil on Canvas	\$350.
45	Doug DePice	Abandoned train trestle with red light	22 x 33 in.	Acrylic paint on paper	\$2,000.
46	Doug DePice	Clothes Pole with Sheets	8 ½ x 11 in.	Acrylic Paint on Paper Board	\$800.
47	Doug DePice	Port Newark Rail Yard	9 x 12 in.	Charcoal Drawing on Paper	\$450.

ETTY YANIV, 4th Floor , Hallway & Elevator Lobby September 29, 2016 - January 5, 2017



L-R: Works by Etty Yaniv: pen and collage on paper, *What is a Widget*; mixed media on paper, *The Street of Crocodiles I*; mixed media on paper, *What Makes a Good Twit*; pen and collage on paper, *Cookie*.

ETTY YANIV

In her drawings Etty Yaniv probes at the delicate balance between culture, people, and technology. She draw upon visual patterns from her immediate environment to create her own imaginary space. Her layered drawings highlight the connectivity between diverse complex systems, ranging from science and nature to language and architecture. Her drawings resemble hybrid mindscapes in which the viewer is placed somewhere between the real and the imagined, the organic and the artificial, landscape and topography.

Etty Yaniv was born in Tel Aviv, Israel and currently works on her art, art writing and curatorial projects in Brooklyn. She has exhibited her work nationally and internationally in group shows including Haifa museum, Israel, Newark Museum, NJ, RJampol Projects, NYC, The Gateway Project, Newark, Helen Day Center, VT, Life on Mars, NYC, Ten Eyck Storefront, NYC, AIR, NYC, The Sheen Center, NYC, Leipziger Baumwollspinnerei, Leipzig, Germany. Solo shows include UConn, CT, Purdue University, IN, Monmouth University, NJ, Montserrat College of art, MA, Long Island University, Brooklyn. Her illustration work was featured in publications such as *The New York Times* and *The Nation*. Her exhibitions were reviewed in various media including *Hyperallergic* and NPR. She holds a BA in Psychology and Literature from Tel Aviv University, a BFA from Parsons School of Design, and an MFA from SUNY Purchase.

For more information, visit <http://www.ettyyanivstudio.com/>.

To purchase artwork, please contact Gallery Director, Dr. Lynn L. Siebert, at Lsiebert@morrisarts.org.

ETTY YANIV, 4th Floor, Hallway & Elevator Lobby September 29, 2016 - January 5, 2017

<i>Number</i>	<i>Artist</i>	<i>Title of work</i>	<i>Dimension</i>	<i>Medium</i>	<i>Price</i>
1	Etty Yaniv	On and Off	18"x24"	mixed media on paper	\$500
2	Etty Yaniv	The Street of Crocodiles 1	11"x14"	mixed media on paper	\$800
3	Etty Yaniv	Safety Manual 5	11"x14"	mixed media on mylar	\$450
4	Etty Yaniv	What makes a good twit	11"x14"	mixed media on paper	\$450
5	Etty Yaniv	The Street of Crocodiles 2	11"x14"	mixed media on paper	\$800
6	Etty Yaniv	Watch Out	11"x14"	mixed media on paper	\$450
7	Etty Yaniv	Lets talk about why they're controversial	11"x14"	mixed media on paper	\$450
8	Etty Yaniv	User Name	14"x17"	pen on paper	\$400
9	Etty Yaniv	To begin, click	14"x17"	pen on paper	\$450
10	Etty Yaniv	Sensory input of transient states	14"x17"	pen on paper	\$450
11	Etty Yaniv	Total touch	14"x17"	pen and whiteout on paper	\$450
12	Etty Yaniv	Checklist	14"x17"	pen on paper	\$450
13	Etty Yaniv	Top Stories	14"x17"	pen and graphite on paper	\$450
14	Etty Yaniv	As soon as I started, people wasted more data	14"x17"	pen on paper	\$450
15	Etty Yaniv	All his songs are rooms that he constructed	14"x17"	pen on paper	\$500
16	Etty Yaniv	Browser	14"x17"	pen on paper	\$500
17	Etty Yaniv	In a nutshell	14"x17"	collage and pen on paper	\$500
18	Etty Yaniv	It includes source code	14"x17"	pen and collage on paper	\$450
19	Etty Yaniv	Cookie	14"x17"	pen and collage on paper	\$450
20	Etty Yaniv	Create Profile	14"x17"	mixed media on paper	\$450

Atrium Art Gallery Exhibition

21	Etty Yaniv	Apple	14"x17"	pen on paper	\$500
22	Etty Yaniv	Add friend, 4	14"x17"	pen on paper	\$450
23	Etty Yaniv	Optic hierarchy	14"x17"	pen on paper	\$400
24	Etty Yaniv	change profile	14"x17"	pen on paper	\$450
25	Etty Yaniv	Number of times of reduction	14"x17"	pen and graphite on paper	\$450
26	Etty Yaniv	What is a widget	14"x17"	pen and collage on paper	\$450
27	Etty Yaniv	Advanced search	14"x17"	pen and whiteout on paper	\$400
28	Etty Yaniv	Wite Out	14"x17"	pen and collage on paper	\$400
29	Etty Yaniv	Slide to unlock	14"x17"	pen on paper	\$500

GAIL WINBURY, 5th Floor

September 29, 2016 - January 5, 2017



L-R: Gail Winbury works: oil and pastel, *Gravity*; oil and charcoal, *Release*; oil, *Rites of Spring*; oil and charcoal, *Many Facets*; oil, *Sarabande*.

GAIL WINBURY

Gail Winbury is a contemporary abstract artist with solo and juried exhibits in galleries and museums throughout the United States and Europe. She is slated for a two-person exhibit in Germany, 2017. She was recently awarded and returned from an artist residency in Israel, June 2016. She received a visual-arts fellowship for Italy in 2015, and in 2014 was a painting resident at the School of Visual Arts, Manhattan. While oil painting is her primary medium, of late she is exhibiting drawings and works on paper. She has won awards such as the Curator's Choice Award 2 years in a row, and the Curtis Hilliard Memorial Award. In 2015 she was one of 7 artists invited for an exhibit representing the current state of abstraction. Her art is published in a book on Bach's Cello solos, in several art catalogs, including one in Italy with an essay about her work.

For more information, visit <http://www.gwinburypainting.com/>

To purchase artwork, please contact Gallery Director, Dr. Lynn L. Siebert, at Lsiebert@morrisarts.org.

GAIL WINBURY, 5th Floor

September 29, 2016 - January 5, 2017

#	<i>Artist</i>	<i>Title</i>	<i>Medium</i>	<i>Dimensions</i>	<i>Price</i>
1	Gail Winbury	Reverie	Oil	NA	\$3,600
2	Gail Winbury	Saraband	Oil	50x39	\$3,200
3	Gail Winbury	Hers and His	Acrylic	18x28	\$550
4	Gail Winbury	Gravity	Oil and pastel	12x20	\$795
5	Gail Winbury	Emergence	Acrylic	NA	\$550
6	Gail Winbury	Alchemy Unbounded	Oil and silk thread	48x38	\$3,800
7	Gail Winbury	Savage Heat	Oil	38x38	\$2,250
8	Gail Winbury	More Than Skin Deep	Oil	24x24	\$850
9	Gail Winbury	An Invitation	Oil	NA	\$500
10	Gail Winbury	Prototype	Oil	18x28	\$3,600
11	Gail Winbury	Firm Ground	Oil	48x30	\$2,950
12	Gail Winbury	String Theory	Oil and silk thread	48x38	\$3,600
13	Gail Winbury	Japanese Fairy Tale	Oil	48x30	\$3,000
14	Gail Winbury	The Lemon Grove	Oil and charcoal	38x38	\$2,150
15	Gail Winbury	Tone Poem I	Oil	40x50	\$4,000
16	Gail Winbury	Harbor	Oil	48x58	\$6,000
17	Gail Winbury	Many Facets	Oil and charcoal	38x48	\$3,800
18	Gail Winbury	Rites of Spring	Oil	48x38	\$3,800
19	Gail Winbury	Silence Between the Notes	Oil	36x37	\$2,150
20	Gail Winbury	Did You See It	Oil and charcoal	52x62	\$9,000
21	Gail Winbury	Tone Poem II	Oil and tape	38x48	\$3,800
22	Gail Winbury	Nutmeg	Oil and paper	NA	\$600
23	Gail Winbury	If We Listen the Moon Might Sing	Oil	42x38	\$2,500
24	Gail Winbury	Just a Minx	Oil, tape and pastel on board	NA	\$550
25	Gail Winbury	Release	Oil and charcoal	38x38	\$2,250
26	Gail Winbury	Spot On	Oil and paper	20x20	\$525
27	Gail Winbury	Atropos	Oil, gold leaf and vellum	53x50	\$8,000
28	Gail Winbury	"Verklärte Nacht (Transfigured Night)"	Oil, silk thread and tape	NA	\$2,000
29	Gail Winbury	Amalgam	Oil	30x48	\$3,000